

## ***Moving Towards Independence***

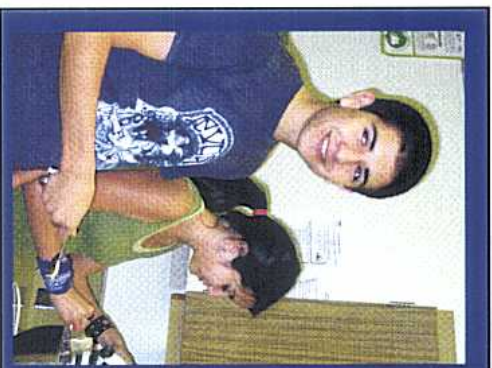
The Community Based Instruction program offers a unique environment for students to acquire the benefits of a standards-based academic program that focuses on individual needs.



Integral within the program are work experience opportunities and life skills instruction.

## **SONORA HIGH SCHOOL**

*A California Distinguished School*



SONORA HIGH SCHOOL  
IN PARTNERSHIP WITH  
THE COMMUNITY AND PARENTS OF  
LA HABRA, BREA, AND FULLERTON

Sonora High School  
401 South Palm Street  
La Habra, CA 90631

Phone: (562) 266-2007

FAX: (562) 266-2040

E-mail: [gday@fjunsd.k12.ca.us](mailto:gday@fjunsd.k12.ca.us)

# **SONORA**

## **HIGH SCHOOL**

# **Community Based Instruction**



A program combining relevant classroom and community learning with a pathway towards independence.

# Moving Towards Independence

Sonora High School believes that all students, upon completion of High School, should be prepared for continued education, employment, and adult roles. To promote this philosophy, Sonora High School and their partners have created a dynamic educational program. This program will equip all students with the knowledge and skills to excel in institutions of higher education and/or careers paths that will prepare students to be life long learners.

Sonora High School currently offers two educational tracts - Diploma and Certificate of Completion.



The educational path is determined by the student and the members of an Individualized Education Program (IEP) team.

## Diploma

Students who earn 240 credits, pass Algebra, the District Competency Exams, and the California High School Exit Examination (CAHSEE) will be eligible for a Sonora High School Diploma. Students will have the opportunity to participate in workability and work experience.



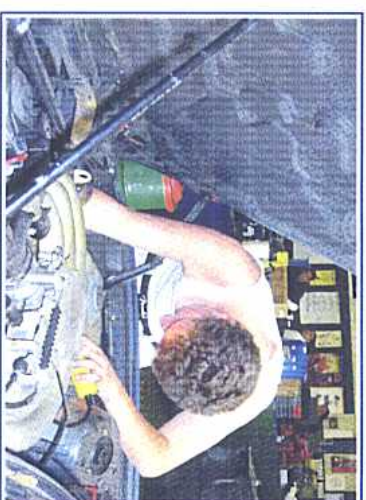
## Certificate of Completion

Students who receive social skills training, independent living skills training, and community-based instruction will be eligible for a Certificate of Completion. Students will have the opportunity to participate in workability and service learning experience.

## Elective Courses at Sonora High School

Auto Shop, Agriculture Program, Agriculture Mechanics, Woodshop, Forensics, Floral, Art, Theatre, Medical Careers and Culinary Arts

## Partnerships



Sonora High School has partnerships with:

- St. Jude Medical Center to provide work experience.
- The North Orange County Adult Education Program at Fullerton College, to allow students to attend college classes.
- La Habra Bowl which will provide an opportunity for students to bowl during the semester.
- La Habra City Community Services Department.
- Regional Center of Orange County.